

*For Graduate and Professional Students, Post Docs, Training Grant Applicants and Recipients*

# Certificate Focuses on Health Outcomes Research

*If you are interested in solving problems in community health, health services, or health policy, consider the Certificate in Clinical and Community Outcomes Research. The curriculum focuses on research methods being applied to current issues in health and health care settings. The certificate was designed to encourage innovative approaches to solving community health problems.*



*"I have developed skills in engaging in multidisciplinary collaborations along with appropriate techniques to manage a multidisciplinary research team, and successful approaches to community engagement. These skills are essential in being an effective future researcher." **Advice:** "Be an activist in research so that you can gain the skills necessary to make change happen!"*

**Maichou Lor PhD;**  
2014 Certificate Alum;  
Postdoctoral Research  
Fellow, Columbia University,  
New York



*"I learned the importance of involving end-users right from the start of the research project. Their involvement enhances the entire research experience from ensuring that the research question/topic is pertinent, increasing the participation in the project, and ensuring the success of translating your research findings into clinical practice." **Advice:** "Do not underestimate the importance of community and end-user engagement in successful research. And most importantly – have fun!"*

**Jennifer Weiss, MD, MS;**  
2014 Certificate Alum;  
Assistant Professor,  
Gastroenterology and  
Hepatology, Department of  
Medicine, School of Medicine  
and Public Health, University  
of Wisconsin-Madison



*"The strategies I learned for working with community partners enabled me to form research relationships that have supported a range of research projects." **Advice:** "Take advantage of the collective expertise of mentors and peers in the Certificate Program to help you identify and troubleshoot in forming productive partnerships."*

**Andrea Gilmore-Bykovskyj,**  
**PhD, RN;** 2014 Certificate  
Alum; Assistant Professor,  
School of Nursing, University  
of Wisconsin-Madison



*"I would recommend this program to other students if they are doing implementation research, or as I call it, research where you might actually realize changes and improvements in outcomes in your lifetime! It forced me to explore research methods and concepts that I would not have sought out on my own. Turns out there are a lot of things in this world you didn't realize you didn't know until you learn them!"*

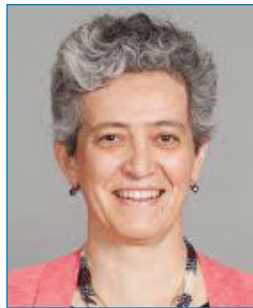
**Stacy Walz, PhD, MS;** 2012  
Certificate Alum; Department  
Chair and Assistant Professor,  
Clinical Laboratory Sciences,  
Arkansas State University-  
Jonesboro

# University of Wisconsin-Madison Faculty Advisers

**Faculty advisers with extensive research experience work with certificate students** to design a program to meet their specific training needs. An objective is to match each student with an adviser from outside his/her discipline in order to expose students to variety of perspectives. Certificate advisers have said that this benefits them in the same way!



**Barbara Bowers PhD, RN, FAAN;** Professor, School of Nursing; Director, Certificate in Clinical and Community Outcomes Research; Associate Dean for Research; Charlotte Jane and Ralph A. Rodefer Chair; Helen Denne Schulte Professor



**Pascale Carayon, PhD;** Professor, College of Engineering; Procter & Gamble Bascom Professor in Total Quality in Industrial and Systems Engineering; Director of the Center for Quality and Productivity Improvement



**Betty Chewning, PhD;** Professor, School of Pharmacy; Apple Distinguished Chair; Director of the Sonderegger Research Center



**Jan Greenberg, MSSW, PhD;** Professor, School of Social Work; Associate Vice Chancellor for Research and Graduate Education



**Maureen Smith, MD, PhD, MPH;** Professor, Departments of Population Health Sciences and Family Medicine; Director, Health Innovation Program; Director, Community Academic Partnerships Core, Institute for Clinical and Translational Research

---

## Finding Training Grant Opportunities

**Training grants often cover such expenses as tuition and fees, travel and conference registrations.** For information about training grant opportunities, visit the sites listed below. Also, ask your colleagues and research administrators in your department.

- **UW ICTR Career Development Award Programs** ([goo.gl/eQ2Geb](http://goo.gl/eQ2Geb))
- **Building Interdisciplinary Research Careers in Women's Health (BIRCWH) Scholars Program** ([goo.gl/qkXgMM](http://goo.gl/qkXgMM))
- **Centennial Scholars Program** (for UW SMPH faculty) ([goo.gl/HX5Kcl](http://goo.gl/HX5Kcl))
- **UW-Madison Office of Postdoctoral Studies** ([goo.gl/7ThFIM](http://goo.gl/7ThFIM))
- **Funding Information for New and Current Graduate Students** ([goo.gl/ZA6LRM](http://goo.gl/ZA6LRM))
- **NIH Research Training and Career Development Programs** ([goo.gl/z3F4Ww](http://goo.gl/z3F4Ww))



*"The training plan is to prepare us to be independent investigators, not just to do the proposed research. One of my departmental mentors, Professor Ian Bird, advised me to start where I want to be in 20 years and work backwards. Keeping the end in sight from the beginning makes a compelling argument for why folks should invest in us now."*

**Heidi Brown, MD, MAS;** 2015 Certificate Alum; Wisconsin Multidisciplinary K12 Urologic Research Career Development Program Scholar; Assistant Professor, Departments of Obstetrics & Gynecology and Urology, School of Medicine and Public Health, University of Wisconsin-Madison

## Tuition

The fee structure for the certificate is the same as that of the UW-Madison Master of Public Health (MPH) program, which is posted at [http://registrar.wisc.edu/tuition\\_&\\_fees.htm](http://registrar.wisc.edu/tuition_&_fees.htm). (To view the applicable tuition information, select the term/semester you intend to enroll and, under "Student Career," select Master of Public Health (MPH) in the drop down box.) At the time of this writing, tuition for Wisconsin residents is \$856.36/credit hour. Tuition for nonresidents is \$1,689.29/credit hour. The certificate program is 13-to-15 total credit hours. Most of our students enroll in an average of one three-hour course per semester. Approved, previously completed course work can be retroactively applied to fulfill certificate requirements.

**For complete details about the certificate** visit <https://ictr.wisc.edu/T2TRCertificate> and/or contact: Sharon Schumacher, [sharon.schumacher@wisc.edu](mailto:sharon.schumacher@wisc.edu), 608 262-1415.

**The Certificate in Clinical and Community Outcomes Research** was designed to accommodate the education and training needs of students and researchers from a variety of disciplines. A certificate objective is to encourage innovative approaches to solving community health problems by involving faculty and students of diverse backgrounds and by providing course options from a range of disciplines. Certificate students have come from business, education, engineering, kinesiology, medicine, nursing, pharmacy, physiology, population health and social work.

**CORE/INTRO COURSE** ● ● ●

▶ **POP HLTH 709 - Translational and Outcomes Research in Health and Health Care..... 3**

POP HLTH 709 will introduce you to translational research methods, issues, and competencies, including effectiveness, dissemination, implementation and policy research. Professor Maureen Smith will take you through the steps of designing a sound and competitive project—from developing the research question to reporting the findings.

This course focuses on health issues and settings and is very appropriate for students whose research interests fall into those contexts and/or are seeking to engage with community partners in conducting their research studies. This is a very practical class with weekly activities that will enhance students’ research toolkits.

Multidisciplinarity. Students from previous semesters represent a diversity of professional backgrounds – biomedical engineering, counseling psychology, education, medicine, nursing, occupational therapy, pharmacy, physical therapy, population and public health and the social sciences. Pairings for group projects are strategically formulated to advance multidisciplinary thought processes.

*“It was helpful to hear from students of different programs and how they would approach a problem.”*

**Andrea Gilmore-Bykovskiy, Certificate Alum**



*“I learned about the importance of collaborating with community stakeholders that you intend to influence with your research findings. Taking the time to discuss research ideas, study aims and design, and implementation strategies with community stakeholders before conducting the study greatly assists with development of translational research.”*

**Tolu Oyesanya, PhD, RN; 2015 Certificate Alum; National Research Service Award (NRSA) Alum; TEAM-Science Alum; Post-Doctoral Fellow, Brain Injury Research, Shepherd Center, Atlanta**

**ELECTIVES: Select from lists of approved courses\*, or propose courses that meet criteria** ● ● ○

▶ **Working with Communities ..... 2-3**

Select a course that addresses understanding communities and organizations in which research occurs, how to work with communities and organizations, and the various ways “community” can be conceptualized and why that matters.

*“I learned the importance of building and, perhaps more importantly, maintaining relationships with various research and community partners and the integral role these long-standing relationships will play in my program of research.”*

**Andrea Gilmore-Bykovskiy, PhD, RN; Certificate Alum**

▶ **Quantitative Methods Relevant to Translational and Outcomes Research ..... 3**

Select a quantitative course relevant to research in communities or organizations. Ideally, the course might also address research methods that take account of community and organizational culture and values, that are responsive to community partners’ priorities, or that have a direct benefit to the partner.

*“I learned the benefits of mixed methods research using both quantitative and qualitative research methods to more completely examine your research question. I will definitely continue to incorporate mixed methods research in my future projects”*

**Jennifer Weiss, MD, RN; Certificate Alum**

▶ **Qualitative Methods Relevant to Translational and Outcomes Research..... 3**

Select a qualitative course relevant to research in communities or organizations.

*“I was wholly unfamiliar with qualitative methods before the certificate and now have a profound appreciation for the power of those methods in healthcare research.”*

**Student survey response**

\*List of approved electives at [ictr.wisc.edu](http://ictr.wisc.edu), or by contacting Sharon Schumacher via email: [sharon.schumacher@wisc.edu](mailto:sharon.schumacher@wisc.edu)



## SEMINAR

### ► Seminar ..... 1

Choose between two seminars:

1. Access, Quality, and Outcomes Research Network (AQORN) Seminar (POP HLTH 990-092), an informal lunchtime seminar that is open to University of Wisconsin faculty, staff, and students interested in health services research. AQORN meets for 90 minutes, sometimes as frequently as twice a month. At each meeting, someone who has a research project in progress presents information about their project. Then the group discusses and exchanges information and ideas relevant to the project.
2. The Patient Safety Research Seminar (ISyE 961), a series of video lectures on topics such as human factors research, error analysis, and human factors approaches in various healthcare settings where safety is an issue.

*"I have learned so many new things in the certificate program about D&I [dissemination & implementation] research that I would not have been able to learn anywhere else. It also helped me to connect with others interested in D&I work in a way that I would never have been able to do on my own."*

**Student** survey response



*"This program provided outstanding training in theoretical frameworks for interventions and organizational change which are critical to develop long-term, sustainable interventions."*

**Advice:** *"Research is challenging, but it is an exciting pathway to learn about what interests you, to meet outstanding people, and to make a difference on critical issues."*

**Heather Johnson, MD, MS, FAHA; 2013 Certificate Alum; Associate Professor with Tenure, Department of Medicine, Division of Cardiovascular Medicine, School of Medicine and Public Health, University of Wisconsin-Madison**

## PROJECT

### ► Project ..... 2

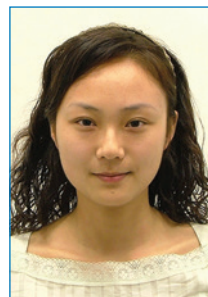
The purpose of the project is to apply and demonstrate your understanding of clinical and community outcomes research principles and methods. Your project will serve as a measure of what you have learned in the certificate program. Principles and methods to be demonstrated:

- Develop a research question addressing a health concern of an actual community.
- Select an evidence-based approach to address the health concern.
- Involve investigators from two or more disciplines and stakeholders from two or more sectors as partners in your project.
- Demonstrate an understanding of collaboration skills for sustainable partnerships, e.g., benefits to the community partner(s) are built into the project; evidence of partner input to project design.
- Employ data gathering and analysis methods that respect community partners' organizational culture, values, staffing, and work flow.



*"My program of research is evolving into dissemination and implementation science. Completing the certificate helped me to see the path I should pursue and jump started my conceptualization of my program of research. **Advice:** Enroll in the certificate program early in your academic trajectory!"*

**Barbara King, PhD, RN; 2012 Certificate Alum, Assistant Professor, School of Nursing, University of Wisconsin-Madison**



*"I augment my quantitative analysis by interviews with health care providers and patients, in order to achieve a better understanding from the target population's perspective. Thanks to the training I received, I'm aware of the gap between data analysis results and what happened in the real settings, and the importance of working together with the stakeholders."*

**Jia Pu, PhD; 2012 Certificate Alum, Health Researcher at Mathematica Policy Research, San Francisco Bay Area**

### ► Total Credit Hours ..... 13-15